



STAINLESS STEEL

150 LBS SCREWED FITTINGS

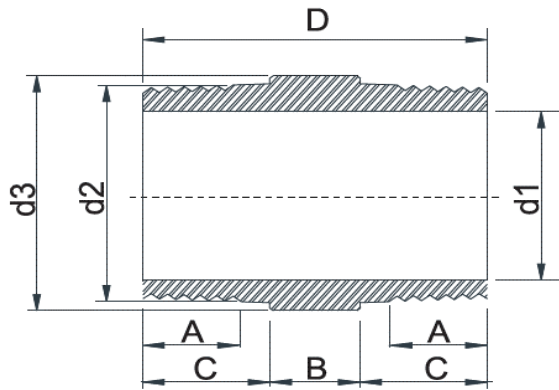
BSPP (ISO 228-1), BSPT (ISO 7-1), NPT THREAD

DIMENSION CONFORM TO ASME B16.3 AND ANSI/MSS SP-114-2018 WHERE APPLICABLE

MATERIAL CONFORM TO ASTM A351 GR. CF8 & CF8M

PRESSURE-TEMPERATURE RATINGS 300 PSI (-29 TO 66°C)

MADE BY LOST WAX INVESTMENT CASTING



HEX NIPPLE

SIZE	d1 (mm)	d2 (mm)	d3 (mm)	A (mm)	B (mm)	C (mm)	D (mm)	Weight (Kg/Pc)
1/8"	5.0	10.0	12.9	7.15	6.0	9.75	25.5	0.013
1/4"	6.9	13.4	15.0	10.45	7.8	11.85	31.5	0.025
3/8"	10.2	17.0	17.8	10.65	7.2	12.65	32.5	0.034
1/2"	14.1	21.0	22.8	13.00	8.0	15.50	39.0	0.055
3/4"	19.5	26.2	27.8	13.40	11.0	15.50	42.0	0.080
1"	24.4	33.0	36.7	14.00	12.5	17.25	47.0	0.150
1 1/4"	32.8	42.3	44.6	15.25	13.0	18.70	50.4	0.210
1 1/2"	38.7	47.6	49.8	16.20	13.1	19.20	51.5	0.250
2"	50.3	59.3	61.7	21.40	13.1	24.65	62.4	0.378
2 1/2"	63.5	74.8	77.6	23.80	14.6	28.00	70.0	0.730
* 2 1/2"	65.2	74.8	77.6	23.80	14.6	28.00	70.0	0.552
3"	77.2	87.4	91.1	27.80	14.5	30.25	75.0	0.850
* 3"	77.2	87.4	91.1	27.80	14.5	30.25	75.0	0.780
4"	100.0	112.7	120.0	34.50	16.0	36.00	88.0	1.520
* 4"	101.0	112.7	120.0	25.50	16.0	28.00	72.0	1.072

* Octagonal